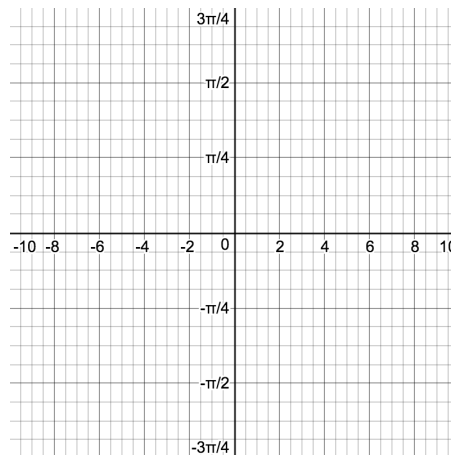
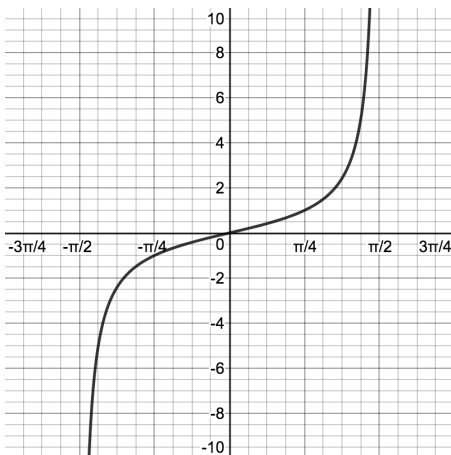
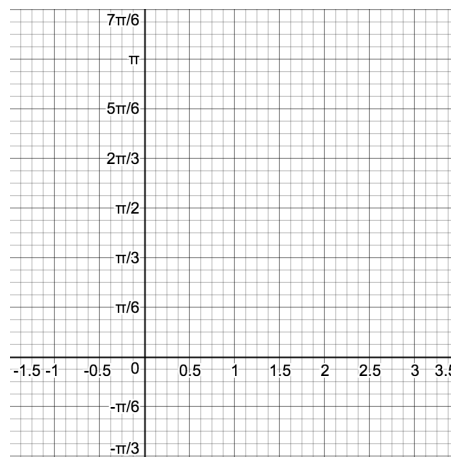
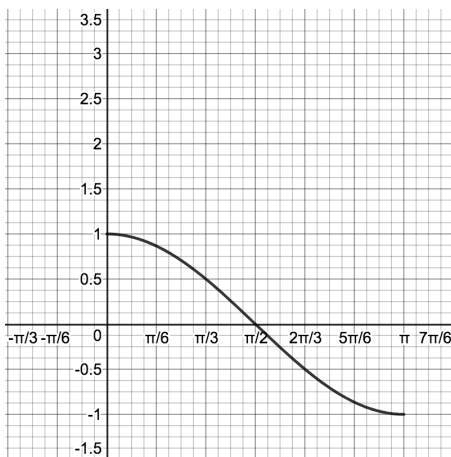
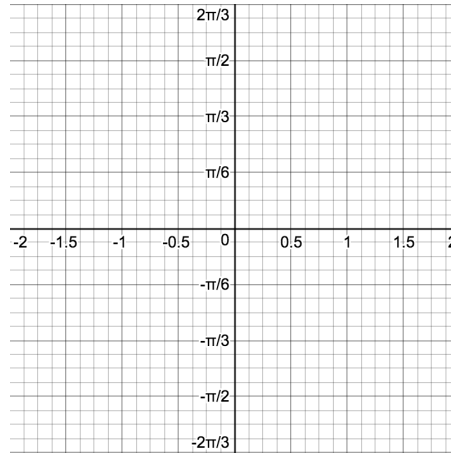
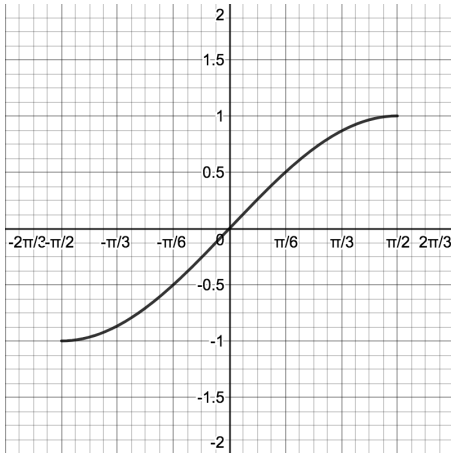


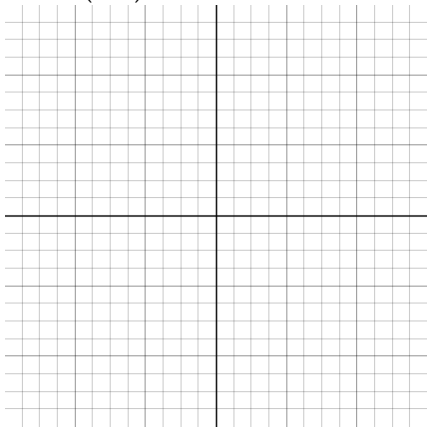
§1.7: Inverse Trig Functions

1.] Graph the inverse trig functions on the restricted domains below.

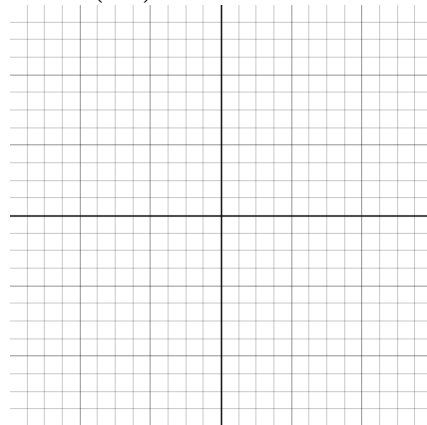


2.] Find the *exact* value of the following inverse trigonometric functions by constructing a reference triangle on the provided grid paper.

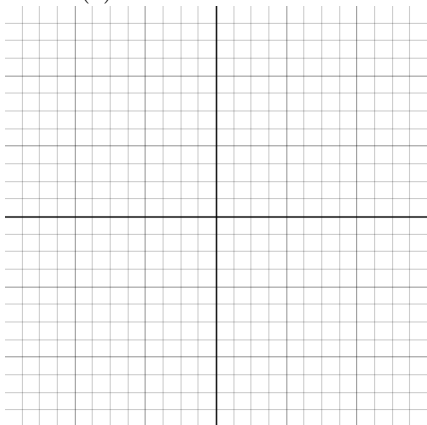
a.) $\sin^{-1}\left(\frac{\sqrt{3}}{2}\right) =$



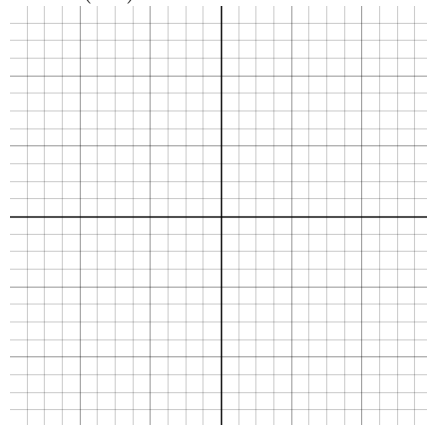
b.) $\arcsin\left(-\frac{1}{2}\right) =$



c.) $\arctan(1) =$



d.) $\arccos(-1) =$



3.] Evaluate the following expressions exactly.

a.) $\tan(\arccos(-5))$

b.) $\cos^{-1}(\cos(\pi))$

c.) $\arcsin\left(\sin\left(\frac{5\pi}{3}\right)\right)$